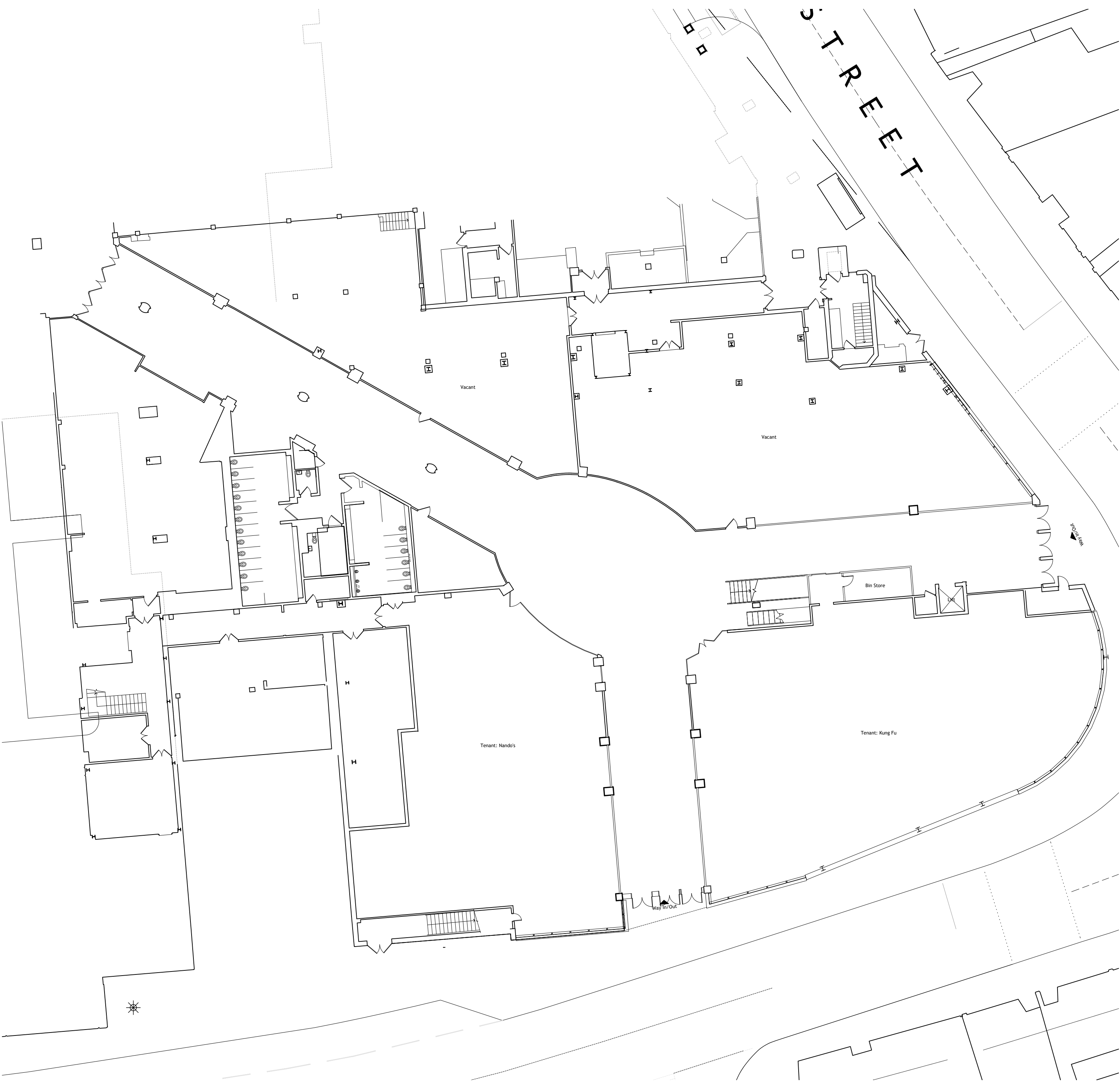


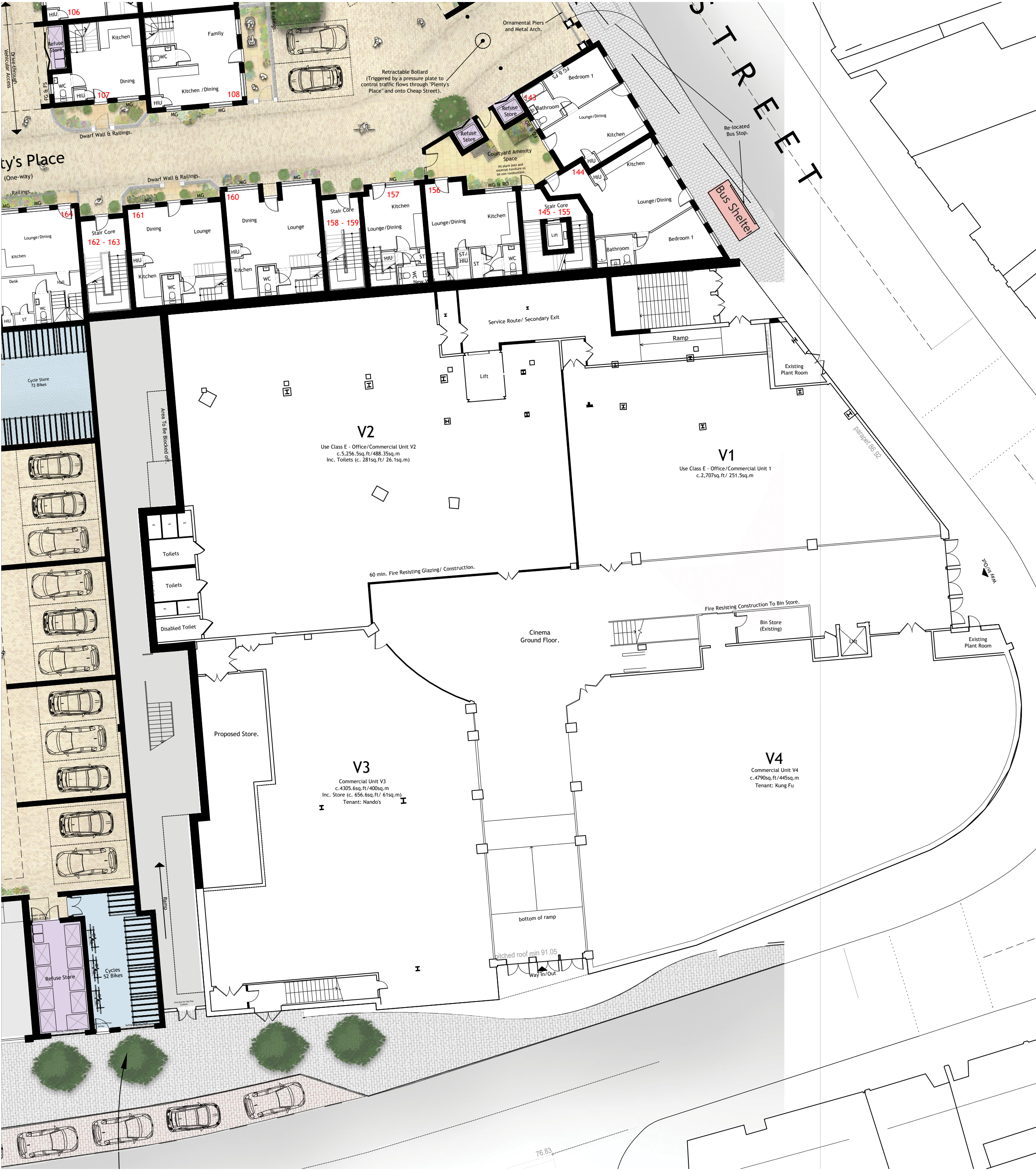
- NOTES
- Contractors must check all dimensions on site. Only figured dimensions are to be worked from. Discrepancies must be reported to the Architect or Engineer before proceeding. © This drawing is copyright.
  - Reproduced from OS Sitemap © by permission of Ordnance Survey on behalf of The Controller of Her Majesty's Stationery Office. © Crown copyright 2008. All rights reserved. Licence number 100007126.
  - Direct scaling off the drawing is permissible for planning purposes only.

Existing



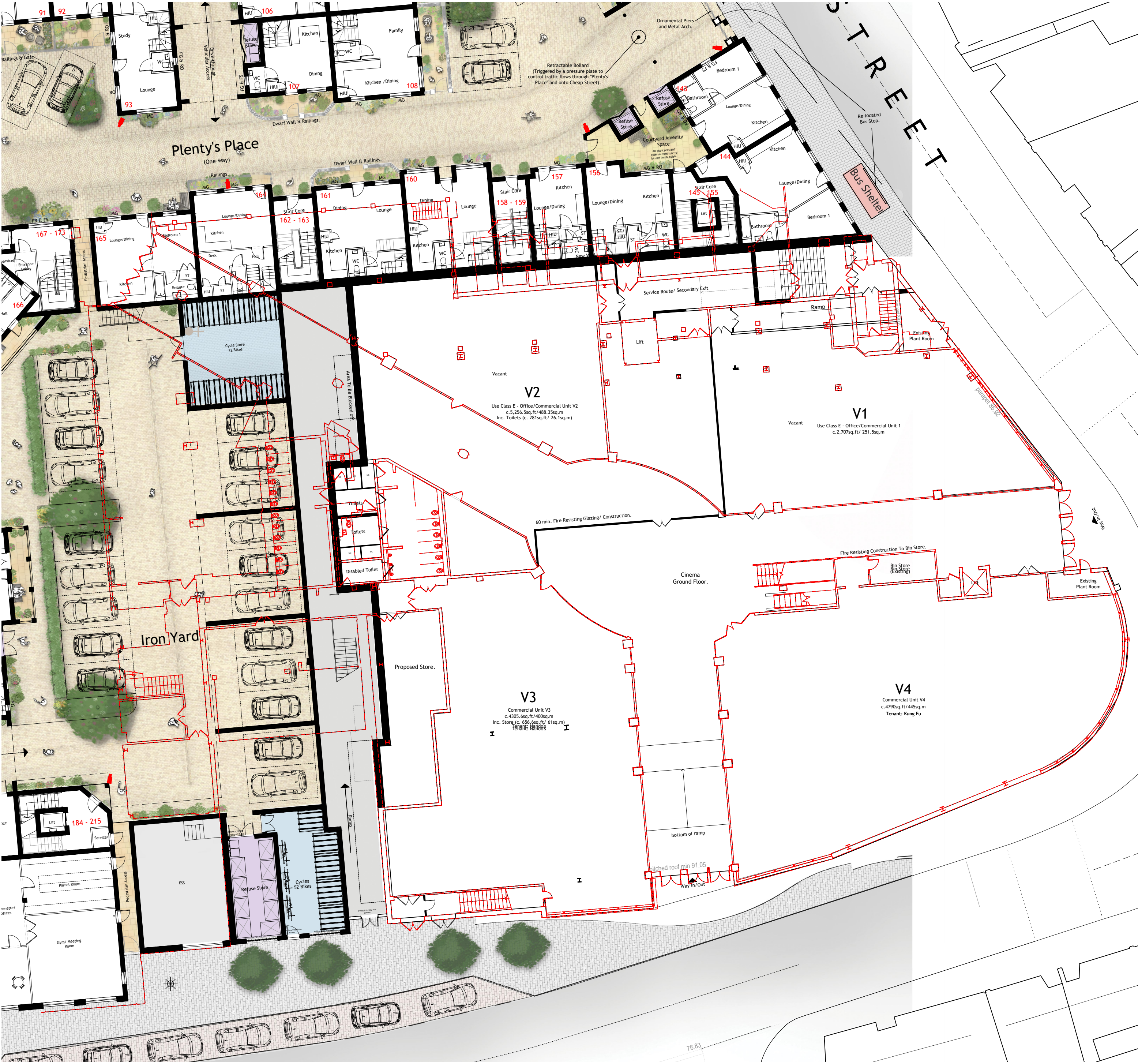
- Use Class E Office / Commercial Unit V1.  
Tenant - Vacant.
- Use Class E Office / Commercial Unit V2.  
Tenant - Vacant.
- Commercial Unit V3 - 339 sq.m Inc Store  
Tenant - Nando's.
- Commercial Unit V4 - 445 sq.m  
Tenant - Kung Fu.

Proposed



- Use Class E Office / Commercial Unit V1 - 251.5 sq.m / 2707.1 sq.ft.  
Tenant - Vacant.
- Use Class E Office / Commercial Unit V2 - 488.35 sq.m Inc Toilets / 5256.6 sq.ft Inc Toilets.  
Tenant - Vacant.
- Commercial Unit V3 - 400 sq.m Inc Store / 4305.6 sq.ft Inc Store.  
Tenant - Nando's.
- Commercial Unit V4 - 445 sq.m / 4790 sq.ft.  
Tenant - Kung Fu.

Existing Overlay onto Proposed



REV	DESCRIPTION	DRN	CHD	DATE
PRELIMINARY	INFORMATION			TENDER
CONSTRUCTION	AS BUILT			
SCALE	1:200 @ A1	DATE	AUG 2024	
DRAWN	TNM	CHK	JAL	
DRAWING NO.	19401/1039	REV	-	
TITLE	Old Town, Newbury.			
DETAILS	Ground Floor Plan, Vue Cinema Comparison.			

LOCHAILORT

Woods Hardwick  
Architecture | Engineering | Planning | Surveying

BEDFORD : HEAD OFFICE  
15-17 Goldington Road  
Bedford MK40 3NH  
T: +44 (0) 1234 268862  
ONLINE: mail@woodshardwick.com

BIRMINGHAM  
Fort Dunlop, Fort Parkway  
Birmingham B24 9FE  
T: +44 (0) 121 6297784  
woodshardwick.com

PLEASE CONSIDER THE ENVIRONMENT BEFORE PRINTING THIS DRAWING



- NOTES
1.

Contractors must check all dimensions on site. Only figured dimensions are to be worked from. Discrepancies must be reported to the Architect or Engineer before proceeding.  
© This drawing is copyright.
2.

Reproduced from OS Sitemap © by permission of Ordnance Survey on behalf of The Controller of Her Majesty's Stationary Office. © Crown copyright 2008. All rights reserved. Licence number 100007126.
3.

Direct scaling off the drawing is permissible for planning purposes only.

Existing



- Auditorium 1
- 96 Seats + 4 Disabled Seats.
- Auditorium 2
- 148 Seats + 2 Disabled Seats.
- Auditorium 3
- 116 Seats + 2 Disabled Seats.
- Auditorium 4
- 120 Seats + 2 Disabled Seats.
- Auditorium 5
- 96 Seats + 2 Disabled Seats.
- Auditorium 6
- 147 Seats + 4 Disabled Seats.
- Auditorium 1
- 117 Seats + 4 Disabled Seats.

Total Seating Capacity :  
-860 Seats, Inc 20 Seats for the Disabled.

Proposed



- Auditorium 1
- 96 Seats + 4 Disabled Seats.
- Auditorium 2
- 148 Seats + 2 Disabled Seats.
- Auditorium 3
- 116 Seats + 2 Disabled Seats.
- Auditorium 4
- 120 Seats + 2 Disabled Seats.
- Auditorium 5
- 96 Seats + 2 Disabled Seats.
- Auditorium 6
- 147 Seats + 4 Disabled Seats.
- Auditorium 1
- 117 Seats + 4 Disabled Seats.

Total Seating Capacity :  
-860 Seats, Inc 20 Seats for the Disabled.

Existing Overlay onto Proposed



REV	DESCRIPTION	DRN	CHD	DATE
PRELIMINARY	INFORMATION			TENDER
CONSTRUCTION	AS BUILT			
SCALE	1:200 @ A1	DATE	AUG 2024	
DRAWN	TNM	CHK	JAL	
DRAWING NO.	19401/1040	REV	-	
TITLE	Old Town, Newbury.			
DETAILS	First Floor Plan, Vue Cinema Comparison.			

LOCHAILORT

Woods Hardwick  
Architecture | Engineering | Planning | Surveying

BEDFORD : HEAD OFFICE  
15-17 Goldington Road  
Bedford MK40 3NH  
T: +44 (0) 1234 268862  
ONLINE: mail@woodshardwick.com | woodshardwick.com

BIRMINGHAM  
Fort Dunlop, Fort Parkway  
Birmingham B24 9FE  
T: +44 (0) 121 6297784

PLEASE CONSIDER THE ENVIRONMENT BEFORE PRINTING THIS DRAWING